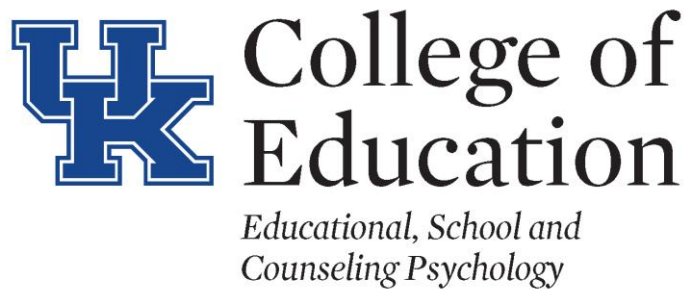


School Psychology Program Newsletter



Announcements

Program Accreditation

After concerted efforts by faculty and students, the school psychology specialist program has received full National Approval by NASP!

IEP and Due Process Training

On September 27th Marti Ginter, Director of the Central Kentucky Educational Cooperative, provided a training on IEP and due process to faculty and students. We had a great turnout. Thank you to Ms. Ginter!

In this issue...

SASP	Page 2
Awards & Graduates	Page 2
Incoming Students	Pages 3-4

Publications	Page 5
Presentations	Page 5
Practicum & Internship	Page 6

Upcoming Events	Page 7
Alumni Spotlight	Page 8-10
Clinic News	Page 9

SASP



Maggie Hartlage (SASP V.P) representing SASP at K Week

The Student Affiliates in School Psychology (SASP) has many exciting events planned this year!

During the summer, current members were paired with incoming students to offer support and help with the transition. SASP put on a dinner for the new students to welcome them to the program. Welcome!!!

During the semester, SASP plans to volunteering with DSACK, Bluegrass Miracle League, take part in Bully Prevention, and spread awareness for School Psychology



(Left to Right) Kirsten Scheil and Hillary Moore at the dinner to welcome new students

Congratulations to our Graduates!

August EdS Graduates:

Cailin Collins
 Kyle Widdison
 Cody Davis

August PhD Graduates:

Jill Rogers

Awards

2016 Burberry Award winner!

Katie Terrell, EdS student and HDI Research Assistant, has been named the 2016 Paul Kevin Burberry Award winner! This award is HDI's highest student honor, and is given to a student involved with HDI who has exemplified in his or her life the leadership, advocacy, and commitment to persons with disabilities and their families.

Co-nominator Barry Whaley stated, "Katie has always gone above and beyond...She has personally mentored no fewer than six students with developmental disabilities, facilitating their successful completion of postsecondary courses."



(Left to Right) Kathy Sheppard-Jones, Clyde David and Susan Burberry, and Katie

2016 Helen Thacker Graduate Fellowship in Educational & Counseling Psychology recipient!

Chelsea Sheehan, PhD student has been named a 2016 Helen Thacker Graduate Fellowship recipient! This fellowship was established in 2000 by Helen Thacker Hill and is awarded to graduate students engaged in active research in psychological aspects of educational counseling.

Incoming Students

The School Psychology Program welcomes 6 new EdS students and 2 new PhD students to the program!



Jessica Claire Gregory is a doctoral student in the School Psychology program. She graduated from Friends University in Kansas with Highest Honors and a BFA in Ballet. She then obtained her MA in Community Counseling from the University of Texas at San Antonio. Jessica has worked on a research team studying PTSD, completed internships serving diverse clientele, and worked in an inpatient substance abuse facility developing curriculum for the program's family weekend and using her Psychodrama training to create process groups. Her research interests include substance abuse prevention, movement, mindfulness, and sociometric connections in groups.



Jordan Findley is a doctoral student in the School Psychology program. She graduated from the University of Kentucky with a B.S. in Psychology. During her undergraduate career she worked in a developmental lab studying infants' processing of emotional body language. She additionally worked in the P20 Motivation and Learning Lab where she assisted a scale development project looking to measure teacher self-efficacy when teaching students with autism. Her current research interests are in intervention strategies for students with ASD and supports for parents and teachers of students with ASD.



Jorgina Boloor is a specialist student in the School Psychology program. She graduated from Loyola Marymount University with her B.A. in Psychology in 2014. During her undergraduate studies she worked as a student teacher at the children's center on her college campus, and volunteered at one of the first elementary schools in California to incorporate the inclusion model in all classrooms. Over the last few years she has worked as the school administrator for KinderCare Learning Center. As a School Psychology student, she is interested in researching effects of inclusive services, and the alleviation and prevention of teacher burnout.



Stephen Craker is specialist student in the School Psychology program. He graduated from Indiana University, Bloomington in 2016 with a Bachelor of Arts in Psychology and minors in Counseling, Spanish, and Religious Studies. During his undergraduate career he was supervised while completing his independent research on different religious orientations and their impact on altruistic behaviors and racial biases. During his undergraduate career he also interned at Bloomington Meadows Hospital, a mental health hospital, working with acute child and adolescent patients. This year he will be starting a Graduate Certificate in Developmental Disabilities and begin practicum in Franklin County

Incoming Students continued



Lauren Duren is specialist student in the School Psychology program. She is from Knoxville, TN and graduated from the University of Tennessee, Knoxville in 2016 with a B.A. in Psychology and a minor in Africana Studies. During her undergraduate career she was involved in research that focused on racial prejudice and the influence of threat on evaluative processing.



Jensen Lucas is specialist student in the School Psychology program. She is from Georgetown, KY. She graduated from Western Kentucky University in 2016 with a B.A. in Psychology. While at WKU, she interned for the Children's Crisis Stabilization Unit in Bowling Green, Kentucky. During her undergraduate career, she also worked for a summer as a CLS for children with autism.



Magen Murphy is a specialist student in the School Psychology program. She graduated from Cleveland State in 2016 with a B.A. in Psychology. In her free time she enjoys running, reading, cooking, and yoga.



Emily Williams is a specialist student in the School Psychology program. She graduated in May 2016 with a B.A. in Psychology. While obtaining her undergraduate degree, she was a research assistant for Dr. Milich and Dr. Lorch in their ADHD story comprehension lab throughout Lexington elementary schools. Emily also completed a research project on the big five personality traits and infidelity among women while at the University of Kentucky

Publications

- Abreu, R. L. Black, W. W., Mosley, D. V., & Fedewa, A. L. (in press). LGBTQ youth bullying experiences in schools: The role of school counselors within a system of oppression. *Journal of Creativity in Mental Health*.
- Ahn, S., Lu, M., Lefevor, G.T., Fedewa, A.L., & Celimi, S. (2016). Application of Meta-analysis in Sport and Exercise Science. In N. Ntoumanis & N.D. Myers (Eds.), *An Introduction to Intermediate and Advanced Statistical Analyses for Sport and Exercise Scientists* (1st ed., pp. 233-252). Chichester, UK: Wiley
- Cornelius, C., Fedewa, A. L., & Ahn (accepted for publication). The effect of physical activity on children with ADHD: A quantitative review of the literature. *Journal of Applied School Psychology*.
- Erwin, H. E., Fedewa, A. L., Thornton, M. & Ahn, S. (2016). Elementary Students' Physical Activity Levels and Behavior when using Stability Balls. *Journal of Occupational Therapy*, 70, doi: 10.5014/ajot.2016.017079
- Fedewa, A. L., Ahn, S., Suarez, M. M., Reese, R. J., Davis, M. C. & Prout, H. T. (2016). Does psychotherapy work with school-aged youth? A meta-analytic examination of moderator variables that influence outcomes. *Journal of School Psychology*, 56, 59-87. doi: 10.1016/j.jsp.2016.03.001
- Fisher, S., Malone, C., & Sheehan, C. (2016). Integrated mental health and substance use interventions in secondary schools. *NASP Communique*, 45(2) 24-26.
- Harrison, A. J., Slane, M., Hoang, L., & Campbell, J. M. (in press). An international review of autism knowledge assessment measures. *Autism*.
- Ruble, L., Wong, W., & McGrew, J. (2016). Data Collection in Education and Measurement of Progress. Eds. R. Jordan, K. Hume, & J. Roberts. *Autism & Education*. Sage.
- Sims, M., Abel, M., Clasey, J., Beighle, A., Fedewa, A. L. & Erwin, H. E. (2016). Validation of the System for Observing Activities in the Classroom Environment. *Research in Dance Education*. doi: 10.1080/14647893.2016.1150451

Presentations

- Abreu, R. L., & Fedewa, A. L. (2016, August). *LGBTQ Parents Navigate K-12 Education: Choosing Schools, Involvement, Advocacy, and Partnerships*. Poster accepted to the annual meeting of the American Psychological Association (APA), Denver, Colorado.
- Duncan, A., & Ruble, L. (2016, May). Surviving and Thriving in the Real World: A Daily Living Skills Intervention for Adolescents with ASD. Poster presentation at the 2016 International Meeting for Autism Research, Baltimore, MD.
- Fedewa, A. L. (2016, August). An analysis of three physical activity interventions on children's behavior, achievement, and activity: Integrating Science, Practice and Policy: Physical Activities for the Psychological Development of Youth Symposium. *American Psychological Association*, Denver, CO.
- Fedewa, A. L. & Black, W. (2016, August). Children and adolescents with same-gender parents: A meta-analytic approach in assessing outcomes. Are lesbian and gay parent families higher functioning and more resilient? The Psychological Development of Youth Symposium. *American Psychological Association*, Denver, CO.
- Hastings, K., & Campbell, J. M. (May 2016). *An Initial Evaluation of the Validity of the Gilliam Autism Rating Scale-Third Edition (GARS-3) in a Clinical Sample*. 2016 International Meeting for Autism Research. Baltimore, MD.
- Jackson, M. W., Ruble, L. A., Rodgers, A. D., Snell-Rood, C., Wong, W. H., Yu, Y., Odom, J. A. & McGrew, J. H., (2016, May). Adapting an evidence based intervention using an implementation science framework. Poster presentation at the 2016 International Meeting for Autism Research, Baltimore, MD.

Congratulations to our students on Internship...

Doctoral Students

Venus Wong, with Dr. Nicole Begg in Spencer County, KY
Alexis Rodgers, with Dr. Nicole Begg in Spencer County, KY

Specialist Students

Jess Clark, with Dr. April Turner in Baltimore City Public Schools, MD
Katie Hastings, with Dr. Byrony Rowe in Mercer County, KY
Matthew Lakamp, with Mike Stapleton in Franklin County, KY
Bethany Stump, with Margaret Pilachowski in Missouri
Katherine Terrell, with Ashley Melloy in Hardin County, KY
Emily Yingling, with Brittany Gray in Jessamine County, KY

...and Practicum!

Advanced Practicum

Colleen Cornelius, with Dr. Alyssa Briggs in Fayette County at The Kentucky Clinic
Rachel Jacob, with Dr. Tammy Hammond-Natof at a Fayette County Private Practice
Chelsea Sheehan, with Dr. Alyssa Briggs in Fayette County at The Kentucky Clinic

Second/Third Year Students

Jordan Allen, with Mike Stapleton in Franklin County
Emma Chadd, with Melisa Morris in Fayette County
Elizabeth Ferguson, with Matthew Grumbein in Franklin County
Maggie Hartlage, with Allison Moore in Boyle County
Shelby Kerwin, with Amber Bruner in Jessamine County
Olivia Lockner, with Tiffany Martinez in Fayette County
Kheo Ly, with Lisa Jackson in Mercer County
Hillary Moore, with Dr. Jamie Roig in Fayette County
Sarah Wooten, with Susan Rudzik in Anderson County

First Year Students

Jorgina Boloor, with Allison Moore in Boyle County
Stephen Craker, with Mike Stapleton in Franklin County
Lauren Duren, with Zach Goble in Scott County
Jordan Findley, with Whitney Zeigler in Franklin County
Jessica Gregory, with Jennifer Leslie in Scott County
Jensen Lucas, with Jennifer Mullins in Scott County
Magen Murphy, with Allison Nelson in Clark County
Emily Williams, with Mellissa Murphy in Anderson County

Upcoming Events

UNITY DAY, Bully Prevention – The Month of October: Volunteers will make baked goods for those who take the pledge to stop bullying and to promote bullying awareness.

SASP Keenland Day! - October 15th

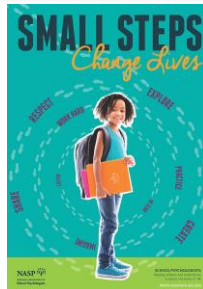
DSACK Walk - October 29th

Bluegrass Miracle League – Youth season run from September 10th – October 16th. Games are at Shillito Park from 10 a.m. - 1 p.m.

TOPS Soccer – Season runs from August 21st – October 30st. Games are held at Masterson State Park, 3051 Leestown Rd. Field 3

School Psychology Awareness Week! – November 14th -18th: This year's theme is Small Steps Change Lives

WALK FOR
DOWN SYNDROME
OCT 29th
2016



UNITY DAY

Together Against Bullying
United for Kindness, Acceptance, and Inclusion

NBPB's National Bullying Prevention Center.
The End of Bullying Begins With You. | NBPC.org/Bullying

Presentations Continued

- Johnson, A. H., Slane, M. M., Hoang, L., & Campbell, J. M. (May 2016). *An International Review of Autism Knowledge Assessment Measures*. 2016 International Meeting for Autism Research. Baltimore, MD.
- Lemler, M., Aiello, r., Wolng, V., & Ruble, L. (2016, March). Parent-Teacher Alliance for Young Students with Autism Spectrum Disorder. Poster presentation at the Gatlinburg Conference
- McDonough, J., Campbell, J. M., Gardner, L. M., & Murphy, L. E. (May 2016). *Examining the Cross-Cultural Accuracy of Three Early Autism Screening Instruments*. 2016 International Meeting for Autism Research. Baltimore, MD.
- Ruble, L., Jackson, M. W., Rodgers, A. D., Snell-Rood, C., Wong, W. H., Yu, Y., Odom, J. A. & McGrew, J. H. (2016, May). Stakeholder Perspective on Transition Planning for Youth with ASD. Poster presentation at the 2016 International Meeting for Autism Research, Baltimore, MD.
- Wong, W. H., Yu, Y., McGrew, J., & Ruble, A. L. (2016, May). Prediagnostic and diagnostic stages of autism spectrum disorders: A parent perspective. Poster presented at the International Meeting for Autism Research, Baltimore, MD.

Grants

- Fedewa, A. L. (2016). Using Squeaky Pianos to encourage movement and play among families and children. Kaboom! Play Everywhere Challenge, Robert Wood Johnson Foundation. Role: Principal Investigator.



Alumni Spotlight

★★★★★★★★

Each newsletter will feature a different UK School Psychology alumnus to highlight the variety of experiences in the field!

★★★★★★★★

Amy Detjen, Ed.S.

When did you graduate from UK with you EdS degree?

I graduated with my EdS degree in the spring of 2003.

Since you graduated from UK, where have you worked? Describe your roles.

I have worked as a school psychologist Fayette County since my internship year, beginning in the fall of 2002. The first nine years of my career I was placed in two elementary buildings fulfilling the traditional role of a school psychologist. As my experience in autism assessment and consultation grew, in my tenth year, my role shifted to one elementary building and autism assessment support and consultation district wide.

Aiming to improve continuity in preschool evaluations and initial IEP development for the preschool population, Fayette County opened the Fayette County Preschool Center (FCPC) in fall of 2013. Currently, all preschoolers throughout the district transitioning from First Steps, or those families of preschool aged children seeking initial eligibility evaluations, come through the FCPC. With the opening of FCPC, and the projected numbers of autism evaluations that would be taking place within this young population, I took the position of the school psychologist at FCPC - which is where I remain today. I continue to assist colleagues with initial autism evaluations across the district when my schedule allows.

In your current position, describe a typical day.

Meetings, Testing, Meetings, Testing--A typical day would have multiple ARC meetings and a variety of evaluations (direct assessments, parent interviews, observations, etc.). If the child attends a preschool or daycare setting, I will always follow up with observations in those more naturalistic settings. These observations are extremely valuable - so I am often in my car visiting a variety of childcare settings. I am so fortunate to work with two ladies that have the position of "preschool assessment specialist". In this position, these wonderful ladies can complete adaptive behavior scales, give developmental assessments, and complete behavior observations and interviews. This allows me to concentrate on cognitive assessments, behavioral assessments, and of course autism assessments. I cannot say enough about the value in a team approach for assessing young children. A diagnosis is never established until I have consulted with all team members.

Continued on Page 9

Clinic News

Dr. Allen is the new Clinical Associate Professor and the Director of our School/Counseling Clinic (name pending). Dr. Allen will build upon the work done by CASPER and will provide additional training experiences for students in counseling psychology program. Dr. Allen is a clinical psychologist with vast expertise in Autism. Welcome!

Spotlight with Amy Detjen Continued

What have been some of the most important lessons you have learned while in the field? Challenges?

Important lessons: your current education provides a good foundation for the start of your career, but expertise only comes with field experience...and time. In the beginning, have confidence in your education and training, but do more listening than talking. Even if there are not seasoned school psychologists available for mentorship in your district, you can learn many things from a variety of professionals in education (teachers, principals, guidance counselors, social workers, etc.) that have been working with children and families long before you chose this career. The flip side of this advice: When to never stay quiet? When you see a child in your schools without an advocate. Then, talk until they listen.

Challenges: Advocating for appropriate supports for children - against arguments centered on budget, staffing, time, or antiquated teaching styles.

What advice would you give to current graduate students?

Do not worry about being unprepared as you start your first job. You will not know what to do in every situation or how to address every circumstance - no one does. Have confidence that you know where to find answers and support when you don't know what to do. You don't have to know how to handle every situation to make an impact in the life of a child on your very first day as a school psychologist.

If you were in a position to hire, what would you look for in a school psychologist

Organization, preparedness, and initiation. Most importantly, however, confidence in what you know, and awareness for what you don't yet know.

How has the field changed since you graduated?

There is currently more training/focus on crisis response strategies and procedures, and RTI was not yet an acronym that existed (at least in my knowledge) back in 2001 and 2002.

What's your favorite part of your job?

Working with families. In having many difficult conversations with families over the past 12 years, each conversation about a diagnosis is as emotionally challenging for me as the first one I had with a family 12 years ago. I hope that never changes. It is the human connection to these families and their experiences that guides me in these difficult moments. While this would seem the most challenging part of my job, it's actually the most rewarding. Providing difficult information directly to families in a way that is professional but compassionate - followed by a plan of action that gives them the hope for the future is an incredible combination.

Tell us about your life outside of School Psychology

I am a wife and mother of three fantastic children. I have two girls, ages 7 and 9 years of age (2nd and 4th grades). Recently, my husband and I decided life was too short to be predictable, so approximately 5 weeks ago we traveled to China and adopted our 8-year-old son. He has been home with us for just over 3 weeks - and he is amazing. So our life is hilariously chaotic at the moment.

What superpower would you like to have?

I would like to speak Mandarin fluently so I can talk with my son without having to use homemade sign language and Google Translate :). I realize that "speaking Mandarin" may not classify as a superpower - but have you heard that amazing language? I vote to make it a superpower!

What I your favorite quote?

A good work quote: "Bless those who see life through a different window and those who understand their view"



(Left to Right) Medina, Alexis, and Dr. Campbell at an Orioles game while at IMFAR in Baltimore

For even more information about the School Psychology program, visit our website:

<https://2b.education.uky.edu/edp/school-psychology-overview/>

And like us on Facebook!

<https://www.facebook.com/pages/University-of-Kentucky-School-Psychology/1500205603560497?fref=ts>